



2023

Tuff-Truck Series

Information

Buck Motorsports Park

900 Lancaster Pike, Quarryville, PA 17566

Competitor@BuckMotorsports.com

Track Phone: (717) 284-2139

www.buckmotorsports.com

Facebook Competitors Group

[Buck Motorsports Park – Competitors](#)

2023 Tuff Truck Racing Schedule	
April 22 nd	Amateur/2wd/4wd/Mod
May 20 th	2wd/4wd
June 24 th	Amateur/2wd/4wd/Mod
July 8 th	Amateur/2wd/4wd/Mod
September 9 th	Amateur/2wd/4wd/Mod
September 30 th	2wd/4wd/Mod
October 7 th	2wd/4wd/Mod

Tuff Truck Purse Structure

Will be run as Separate Classes

Entry fee \$20.00

Fee is waived for those that meet the Youth Motorsports Development Program Criteria

Event Payout Structure

Amateur

1 st	\$100 + Trophy
2 nd	\$75 + Trophy
3 rd	\$50
4 th	\$25

Event Payout Structure

2wd / 4wd / Modified

1 st	\$300 + Trophy
2 nd	\$200 + Trophy
3 rd	\$150
4 th	\$150
5 th	\$25
6 th	\$25
7 th	\$25
8 th	\$25

Tuff Truck Best of Show

Trophy will be awarded to best appearing Tuff Truck Prior to racing.

OPERATION OF CONTEST RULES

ALL CLASSES

1. All contestants at every event must sign a release and entry form understanding that they are competing at their own risk and that they will not bring suit against any officials, employees, event sponsors, Promoter, and/or property owner. By signing the release and entry forms you agree to all rules set forth and warrant that your vehicle meets all the requirements for your class.
2. **A contestant may be disqualified for either emotional or physical reasons by Competition Director or Track Officials. Example:** Disrespecting Buck Motorsports Park Staff, causing an aggressive scene, recklessness, drugs or drinking alcoholic beverages,. Any driver or any of his or her pit crew consuming an intoxicating agent, and/or drugs, prior to or during the event will be disqualified from the event. Drivers will be held responsible for the actions of their crew!
3. **All competitors ages 16 and 17 years old. MUST hold a Valid State Driver's License in order to compete. As well as have a parent or legal guardian signed competition release form.**
4. All participants must have a valid state issued identification card.
5. **Tech officials reserve the right to revise and alter rules throughout the season.**
6. Each vehicle may only be entered into competition 1 time per **class**. Each driver may enter only 1 time per class.
7. Buck officials reserve the right to approve or reject any or all entry applications.
8. ENTRIES CLOSE ONE HOUR BEFORE SESSION IS SCHEDULED TO START.
9. All vehicles must pass tech inspection before competing. If presiding officials determine a vehicle is unsafe, officials have the right to not allow vehicle to compete. Vehicle does not need current inspection sticker, license or insurance. TECH INSPECTION AREA CLOSSES ONE HOUR BEFORE SESSION IS SCHEDULED TO START.
10. All drivers must attend driver's meeting approximately 1 hour before event starts.
11. A vehicle cannot be registered after driver's meeting unless approved by track official.
12. A contestant may be disqualified for either emotional or physical reasons by Competition Director or track officials. Example: recklessness; drugs or drinking alcoholic beverages. Any driver or any of his or her pit crew consuming an

intoxicating agent, and/or drugs, prior to or during the event will be disqualified from the event. Drivers will be held responsible for the actions of their crew!

13. If any vehicle and/or driver is disqualified for any reason, no refund of entry fee.
14. Competition vehicles must be operated in a safe manner at all times within the confines of the track, pit area, and staging areas. Track officials have the right to stop and disqualify any vehicle being operated in a reckless manner. Pit and staging areas speed limit is 5 M.P.H.
15. Only the driver will be allowed in a vehicle when it is being towed or driven in the pit area, staging area, or track. No riders in or on any vehicle while in the pit area, staging area, or track, to include tow vehicles, competing vehicles, tow back and maintenance equipment of any kind.
16. When Competition vehicle's engine is running, a competent driver must be in the driver's seat. No exceptions. Automatic disqualification!
17. Vehicle **MUST** have a fully operational Neutral Safety Switch. As well as a Clutch Safety Switch if the vehicle is equipped with a Manual Transmission. You **WILL NOT** be allowed to compete if these Safety Switches are not functional.
18. Track officials will have the option to check competitors for rule violations at any time during the event.
19. All contestants must drive vehicle onto track and into position to compete under its own power and must leave track under its own power unless for breakage.
20. No one allowed on the track except for track officials and contestant. Track is defined as the area within 15' in any direction of the contest boundaries, including the runoff area at the finish end of the track.
21. All vehicles must be equipped with a 2-1/2 lb. dry chemical fire extinguisher or 1 lb. halon extinguisher. Extinguishers must be fully charged, in working condition, and secured convenient to driver.
22. Vehicles with driveshafts must have some sort of loop, chain, or containment system.
23. Driver must wear D.O.T. approved full-face helmet. Helmet strap must be fastened. Driver must wear long pants and long sleeve shirts, no open footwear allowed. Fire retardant jackets and pants, shoes and gloves highly recommended
24. No loose objects in cab or any place else in vehicle. Any ballast must be securely mounted.

25. Tailgates must be securely fastened or removed. If hood is bolted down, there must be a hole in the hood that measures at least 8" in diameter above the carburetor.
26. Headers and open exhaust permitted. Exhaust must exit under vehicle.
27. Radiator must be in original location. All engine fans must be shrouded. Radiator overflow hoses must point downward.
28. Tires must have D.O.T. approved number. Maximum tire height is 35 inches. O.E.M type wheels required. Bead lock wheels, screwing tires to rims is not permitted. No cutting of tire tread allowed. Wheel weights must be removed before competing (non-tagged vehicles only). Hub cap or wheel covers must be removed before competing
29. **All vehicles must have some form of safety strap to hold up front portion of driveshaft in case of failure; must be securely mounted. Chain or cable (min. 1/4"), steel strapping, etc. will be allowed.**
30. Fuel Tanks - Stock fuel tanks in stock locations are highly recommended. Approved fuel cells may be used and maybe be relocated in the bed of pick-up trucks but must be securely mounted. No fuel tanks or fuel lines allowed inside of vehicle unless they are factory installed.
31. Battery can be relocated inside vehicle but must be securely fastened in a battery box.
32. Verbal or physical abuse towards any track official will result in automatic disqualification.
33. Contest will be governed by track officials and Competition Director with all decisions final.
34. The Promoter or Competition Director reserves the right to change any safety rules if they feel it is necessary.
35. Protest procedures – any participant wishing to protest another participant will be allowed to do so under the following guidelines: Drivers must be registered for the event. A formal protest must be file with the Competition Director, form must be complete, and must be submitted prior to the start of competition. A \$200 cash protest fee will be required. The vehicle protested will be accompanied and evaluated by Buck Motorsports Officials and the driver of the protested vehicle. If vehicle is found to be non-compliant with Buck Motorsports Rules, the driver will need make the vehicle compliant or be eliminated from competition that day. If vehicle is non-compliant the funds will be refunded to the driver who initiated the protest. If the vehicle is found to be compliant, the funds will be split evenly amongst the protested driver and the 1st place purse amount.

AMATEUR CLASS

1. All general operation of contest rules apply
2. If you have competed in 2022 you are not eligible to compete in Amateur Class.
3. Amateur class will run 1 at a time, against the clock at all events.
4. After 2 seasons, Amateur competitors who have won 1st place at any events will no longer be allowed to register for this class.
5. Roll Cages are OPTIONAL, unless factory windshield is removed.
6. All vehicles must have a 4-wheel hydraulic brake system in good working condition.
Individual wheel brakes NOT allowed
7. 2WD&4WD will both be permitted to compete.
8. Driver Must wear seat belt (minimum- factory belt)
9. Vehicles must have original firewall and floor in original location. Only holes allowed are those for brakes, clutch, transmission controls and wiring. If battery is relocated, it must be in a plastic battery box securely mounted.
10. Engine must be in original location as intended by manufacturer. V-8 engines must have been available from the factory for the year, make and model vehicle being used. (Original engine location means just that, engine cannot be moved up, down, forward, or backward from the manufactures original location.)
11. Frames - Must be complete original frame rails and crossmembers at original locations. Cutting frame rails and crossmembers to lighten vehicle is not permitted. Frames can be repaired for rust damage; any frame reinforcement must be approved by Tech Official.
12. No engine mechanical modifications to increase horsepower are allowed. "Made for racing" or high-performance engine parts will not be permitted. Stock factory O.E.M. engine components (carburetor, intake manifold, distributor, rocker arms, camshaft, pistons, crankshaft, etc.) are required & must be the correct make of engine being used. Track officials will have the option to check engines for rule violations at any

time during the event. (Examples - valve cover removal for stock valve train components; bore scope inspection for stock piston domes, etc.). Air cleaners, exhaust systems, and carburetor spacers are exempt from this rule.

13. Must be stock factory suspension, O.E.M. replacement or equivalent. Dual shocks are permitted on front end to reduce breakage. Original front shock must remain mounted in original location, second front shock must be original equipment replacement or equivalent for the vehicle being used. Aftermarket lift kits will be allowed (Max. lift 4"). Length of suspension travel cannot be increased except to accommodate lift kit. Rear shocks must be mounted at original locations. All suspension components must be in good working condition. Racing suspension components will not be allowed, call the Buck office if you have questions.

2WD & 4WD CLASSES

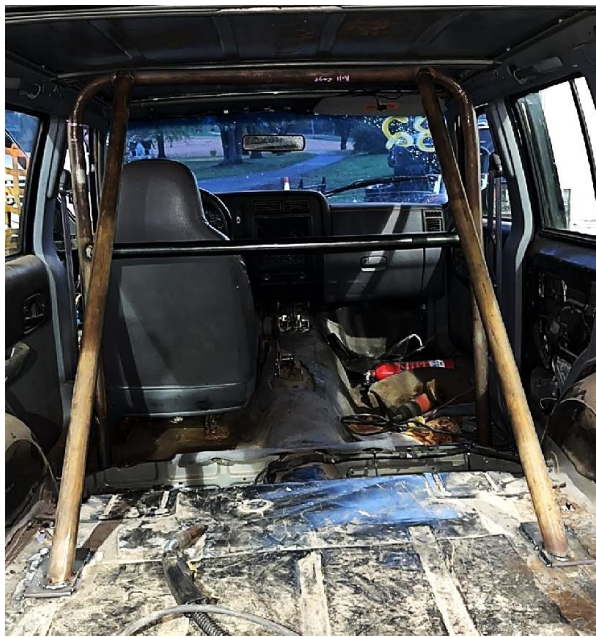
1. **All general operation of contest rules apply**
2. **All vehicles must have drivers side safety net.**
3. All vehicles must have at minimum 4-point safety belt system. Any open body vehicles must have a covering above the driver to contain the driver in the event of a rollover.
4. **If vehicle was originally equipped with 4WD it must run in 4WD class.**
5. All vehicles must have a 4-wheel hydraulic brake system in good working condition.
Individual wheel brakes allowed
6. **All vehicles must have at minimum a 4-point Roll Bar.** All vehicles with open body, removable, fiberglass or soft top vehicles must have at minimum a 6-point Roll Bar attached (in no less than 4 locations) directly or indirectly to the frame. No tailpipe tubing allowed for construction of roll bars. Schedule 40 or DOM required, tubes must appear to be coped or fitted, **no crushing or clamping tubes**. More cage information is available at the bottom of rules section.
7. Vehicles must have original firewall and floor in original location. Only holes allowed are those for brakes, clutch, transmission controls and wiring. If battery is relocated, it must be in a plastic battery box securely mounted.

8. Engine must be in original location as intended by manufacturer. V-8 engines must have been available from the factory for the year, make and model vehicle being used. (Original engine location means just that, engine cannot be moved up, down, forward, or backward from the manufactures original location.)
9. Frames - Must be complete original frame rails and crossmembers at original locations. Cutting frame rails and crossmembers to lighten vehicle is not permitted. Frames can be repaired for rust damage; any frame reinforcement must be approved by Tech Official.
10. No engine mechanical modifications to increase horsepower are allowed. "Made for racing" or high-performance engine parts will not be permitted. Stock factory O.E.M. engine components (carburetor, intake manifold, distributor, rocker arms, camshaft, pistons, crankshaft, etc.) are required & must be the correct make of engine being used. Track officials will have the option to check engines for rule violations at any time during the event. (Examples - valve cover removal for stock valve train components; bore scope inspection for stock piston domes, etc.). Air cleaners, exhaust systems, and carburetor spacers are exempt from this rule.
11. Must be stock factory suspension, O.E.M. replacement or equivalent. Dual shocks are permitted on front end to reduce breakage. Original front shock must remain mounted in original location, second front shock must be original equipment replacement or equivalent for the vehicle being used. Aftermarket lift kits will be allowed (Max. lift 4"). Length of suspension travel cannot be increased except to accommodate lift kit. Rear shocks must be mounted at original locations. All suspension components must be in good working condition. Racing suspension components will not be allowed, call the Buck office if you have questions.

MODIFIED

1. **All general operation of contest rules apply**
2. **All vehicles must have drivers side safety net.**
3. **All vehicles must have at minimum a 6-point Roll Bar.** directly or indirectly to the frame. No tailpipe tubing allowed for construction of roll bars. Schedule 40 or DOM required, tubes must appear to be coped or fitted, **no crushing or clamping tubes.** More cage information is available at the bottom of rules section.
4. All vehicles must have a 4-wheel hydraulic brake system in good working condition.
Individual wheel brakes allowed
5. Driver Must wear Fire Jacket – Pants & Full Suit are Recommended
6. NO Nitrous is allowed.

4 Point Roll Example.



This cage is a standard **minimum** 4-point cage with rear supports and a cross support to tie in a harness. Base plates are welded through floor into the unibody frame rails. Cost and materials list is available.

For Tech + Safety Questions
 Charlie Stoltzfus – Sr. Competition Director
 610-620-8433

For Roll Cage Installation, Parts,
 Cost + Material List
 Cory Pappas
 717-881-8711

Tuff Truck Competition Rules

General Competition Rules

1. When competition is side by side, any competitor that leaves before light is green is automatically disqualified. Official has final say.
2. Failure to follow designated course will result in disqualification.
3. In the event of disqualification, the other competitor immediately automatically advances, and the race is deemed complete.
4. In the event of an uneven number of competitors a random bye run is chosen.
5. Competitors and vehicle can only register once per class.

Round 1-Quarter Finals Round Rules

1. If you are unable to pull to the line and stage once your competitor has staged, you have forfeited your round. The opponent will be issued a Bye Run.

Semi-Finals Round Rules

1. If a competitor cannot race the loser of the previous round will advance and take their spot. If the loser cannot make run, then the other competitor will get a bye run.

Final Round Rules

1. If a competitor cannot make the final round, the loser of the previous round will advance and take the spot. If the loser cannot make the final round, then the opposing racer will re-race as the final round. If the opposing racer cannot make it then race is called.